

COMMUNITY WEB MAPPING PORTAL (CWMP)

The Community Web Mapping Portal (cwmp) has been designed by Melbourne company Spatial Vision who have developed e-farmer and Rabbitscan. The cwmp is based on google earth and the CFA maps.

The cwmp was designed by Spatial Vision in a partnership with The Norman Wettenhall Foundation, an environment group and philanthropic trust whose focus is on biodiversity preservation, landscape restoration, and community education.

The aim of the cwmp is to provide a platform for the community to record sightings of flora, fauna, revegetation sites, weed and pest information and other significant information in the area that they live. The tool will enable people to connect to each other and share knowledge. It also allows organisations to collect data about biodiversity on private land.

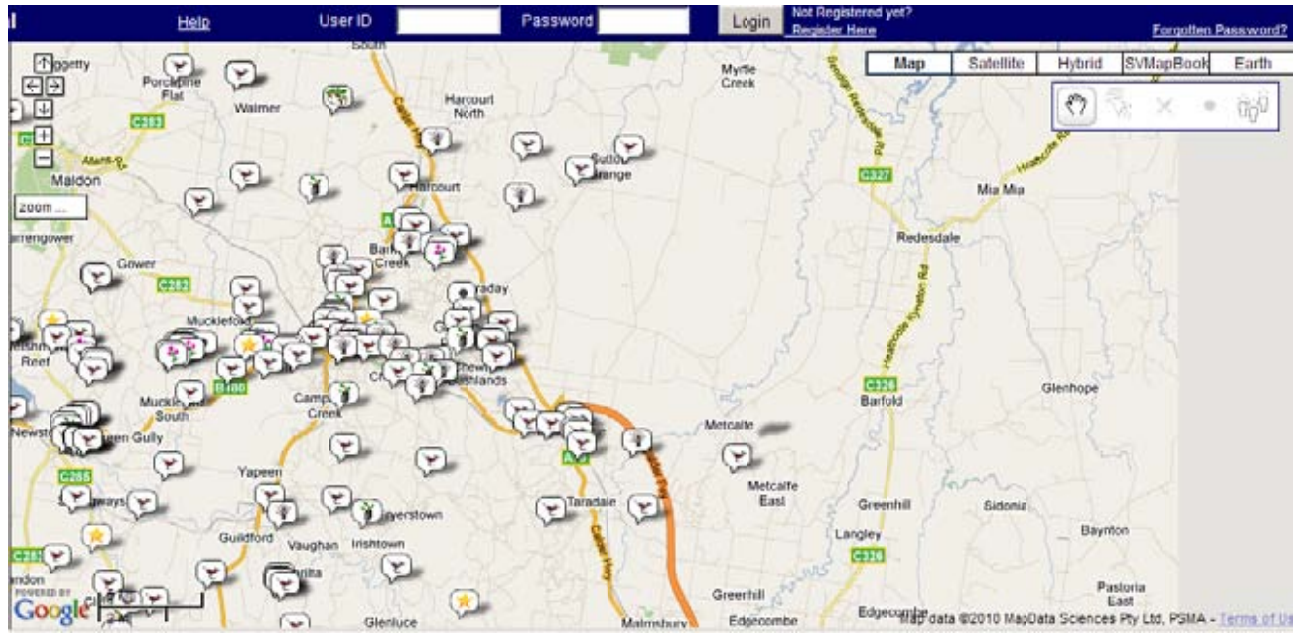
The Connecting Country project around Castlemaine was the first group to use the cwmp. They started by collecting data about one particular species to be used in a funding application. They collected over 50 records and this data was instrumental in their receipt of federal and state government funding.

The cwmp will be used by Connecting Country for monitoring of certain species and is connected with their website and monitoring blog. Other landscape restoration projects being supported by The Norman Wettenhall Foundation have also begun to use the cwmp to collect information about environmental assets in their catchment area.



How to use the cwmp

1. Type in <http://cwmp.spatialvision.com.au/svcwmp/> to go to the Spatial Vision website where the community web mapping portal is held.



2. If your group has a website, this icon can be attached to your site. Users can then connect to the Spatial Vision page from your own page. Email The Norman Wettenhall Foundation's Executive Officer beth@nwf.org.au for help.



3. **To Register:** Click on the **Not Registered? Register here** tab and fill out your details and you are immediately registered and ready to use the mapper.

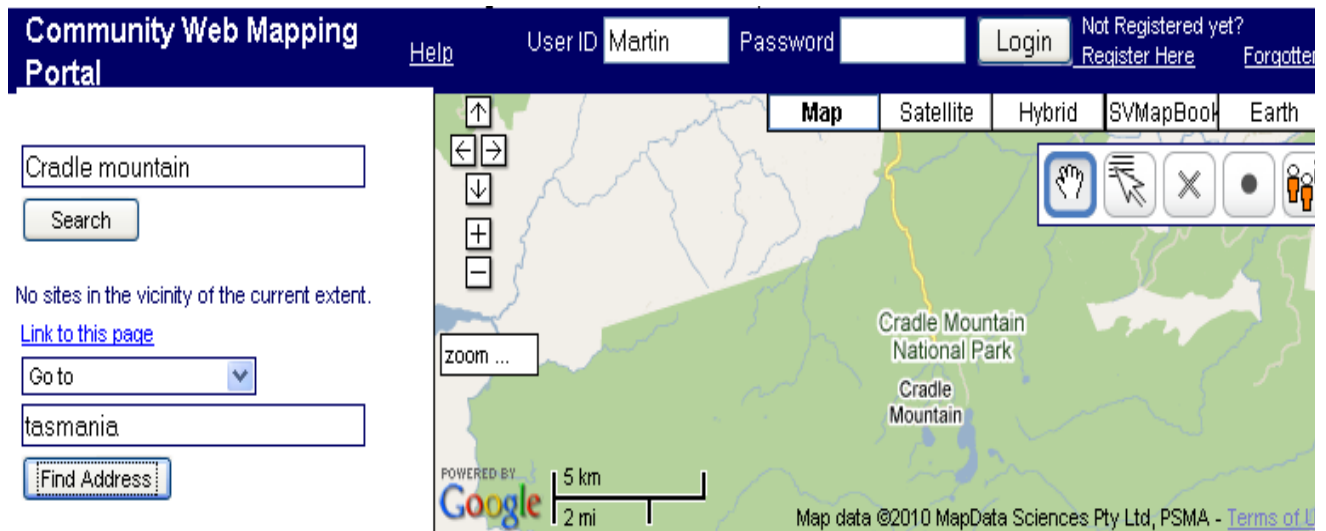


4. **To Login:** Click into **User ID Box** and type your User ID and password and click **Login**.

5. Searching: if you already know the site location or the area on the map you wish to view, type the town in the **Search Box** and then press search.



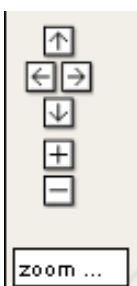
As the Interactive map is an **Australia wide tool** you can choose to type in an area in the **Go To Box** and left click on **Find Address** e.g. Cradle Mountain, Tasmania; or Portland, South West Victoria.



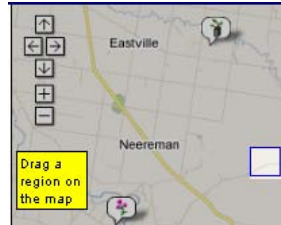
6. Moving: bring the arrow onto the map and it becomes a **Hand Symbol**. Drag the hand left, right or up and down in order to move you around.



The arrows on the left side of the map can also be used to move the map around the page.



7. Zooming: click on **Zoom Box**, then make a box with the **X** that appears.



to zoom back simply click onto yellow box

Other ways to zoom include:

- rolling the mouse wheel forward to zoom in and rolling the wheel backwards to zoom out
- the plus and minus signs will zoom in and out



8. Image Backgrounds

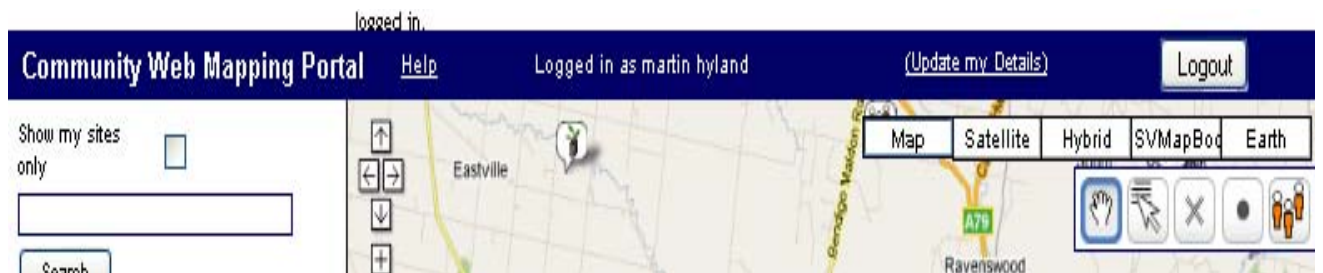


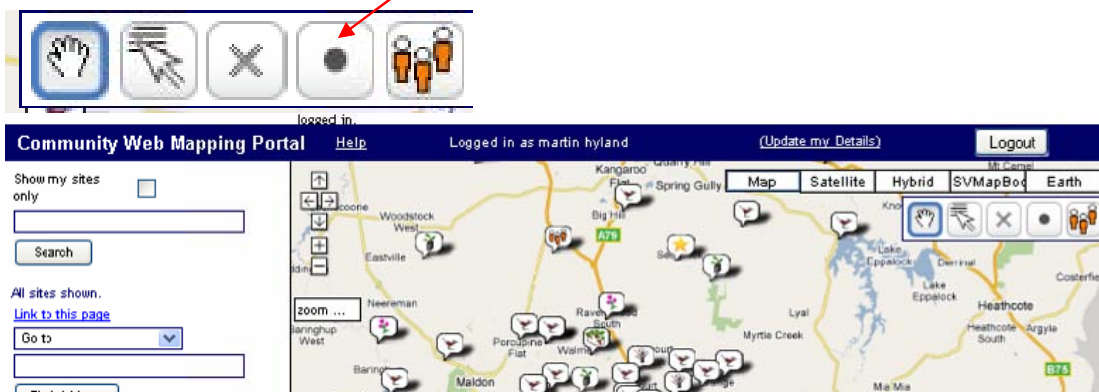
Image backgrounds provide different image bases (perspectives) of the map. You can try 'map', 'satellite', 'hybrid' or 'SVMapBook' – have a play and see what you prefer or what you need.

9. Creating your own Site

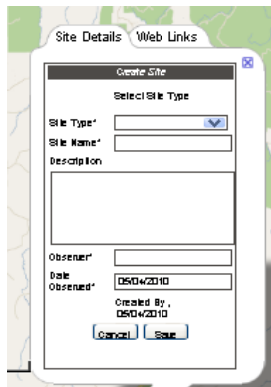
A **registered** and **logged in** viewer is the only person who can **create**, **delete** and/or **edit** a site.

The site which you create is **yours** and can only be altered by you.

To record your observations – click **create a new site** and then click on the map where you want to put that site.



A **site Box** will appear for you to enter your information.



Under **Select Site Type**, you will have a 'drop down' menu of options:

Select Site Type

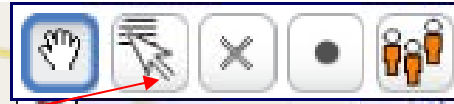
Site Type*

You need to select your site type by choosing from the following: fauna, flora, weeds, revegetation sites, remnant vegetation, cultural heritage sites, or other significant sites.

After you've entered the rest of the information and pressed 'save' the appropriate site icon will appear on the map.



10. Editing a site:



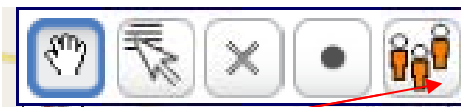
Click on the **Edit site tab** then move on to the map and click on the site icon you want to edit. You need to be logged in to edit a site.

11. Deleting a site:



Click on the **Delete site** tab then move on to the map and click on the site icon you want to delete. Again, you need to be logged in to delete a site.

12. Enter a group:



Click on **Register organisation** tab and a site box will open on the map where you click. You can enter your organisation on the map and include your contact details if you want people to know about you and share your information.

13. Help option



Extra information can be found in this section to help the registered person using the mapping system.